



DEPARTMENT OF PERMITTING, ENVIRONMENT, AND REGULATORY  
 AFFAIRS (PERA)  
 BOARD AND CODE ADMINISTRATION DIVISION  
**NOTICE OF ACCEPTANCE (NOA)**

MIAMI-DADE COUNTY  
 PRODUCT CONTROL SECTION  
 11805 SW 26 Street, Room 208  
 Miami, Florida 33175-2474  
 T (786) 315-2590 F (786) 315-2599  
[www.miamidadegov/pera](http://www.miamidadegov/pera)

**Hartman Windows and Doors, LLC**  
 531 Southern Blvd.  
 West Palm Beach, FL 33405

**SCOPE:**

This NOA is being issued under the applicable rules and regulations governing the use of construction materials. The documentation submitted has been reviewed and accepted by Miami-Dade County PERA - Product Control Section to be used in Miami Dade County and other areas where allowed by the Authority Having Jurisdiction (AHJ).

This NOA shall not be valid after the expiration date stated below. The Miami-Dade County Product Control Section (In Miami Dade County) and/or the AHJ (in areas other than Miami Dade County) reserve the right to have this product or material tested for quality assurance purposes. If this product or material fails to perform in the accepted manner, the manufacturer will incur the expense of such testing and the AHJ may immediately revoke, modify, or suspend the use of such product or material within their jurisdiction. PERA reserves the right to revoke this acceptance, if it is determined by Miami-Dade County Product Control Section that this product or material fails to meet the requirements of the applicable building code.

This product is approved as described herein, and has been designed to comply with the Florida Building Code, including the High Velocity Hurricane Zone.

**DESCRIPTION: Series "Contura" Outswing Wood Casement Window – L.M.I.**

**APPROVAL DOCUMENT:** Drawing No. **08-26**, titled "Contura" Outswing Wood Casement Window – L.M.I.", sheets 1 through 7, dated 03/13/08, with revision dated 05/16/12, prepared by Al -Farooq Corporation, signed and sealed by Javad Ahmad, P.E., bearing the Miami-Dade County Product Control Revision stamp with the Notice of Acceptance number and expiration date by the Miami-Dade County Product Control Section.

**MISSILE IMPACT RATING: Large and Small Missile Impact Resistant**

**LABELING:** Each unit shall bear a permanent label with the manufacturer's name or logo, city, state, model/series, and following statement: "Miami-Dade County Product Control Approved", unless otherwise noted herein.

**RENEWAL** of this NOA shall be considered after a renewal application has been filed and there has been no change in the applicable building code negatively affecting the performance of this product.

**TERMINATION** of this NOA will occur after the expiration date or if there has been a revision or change in the materials, use, and/or manufacture of the product or process. Misuse of this NOA as an endorsement of any product, for sales, advertising or any other purposes shall automatically terminate this NOA. Failure to comply with any section of this NOA shall be cause for termination and removal of NOA.

**ADVERTISEMENT:** The NOA number preceded by the words Miami-Dade County, Florida, and followed by the expiration date may be displayed in advertising literature. If any portion of the NOA is displayed, then it shall be done in its entirety.

**INSPECTION:** A copy of this entire NOA shall be provided to the user by the manufacturer or its distributors and shall be available for inspection at the job site at the request of the Building Official. This NOA **revises and renews NOA# 08-0326.14** and consists of this page 1 and evidence pages E-1 and E-2, as well as approval document mentioned above.

The submitted documentation was reviewed by **Jaime D. Gascon, P.E.**



*J. Gascon*  
 8/13/12

NOA No. 12-0614.05  
 Expiration Date: March 26, 2018  
 Approval Date: August 23, 2012  
 Page 1

**Hartman Windows and Doors, LLC**

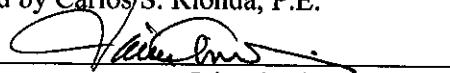
**NOTICE OF ACCEPTANCE: EVIDENCE SUBMITTED**

**A. DRAWINGS**

1. Manufacturer's die drawings and sections. *(Submitted under NOA#08-0326.14)*
2. Drawing No. 08-26, titled "Contura" Outswing Wood Casement Window – L.M.I.", sheets 1 through 7, dated 03/13/08, with revision dated 05/16/12, prepared by Al -Farooq Corporation, signed and sealed by Javad Ahmad, P.E.

**B. TESTS**

1. Test reports on: 1) Air Infiltration Test, per FBC, TAS 202-94  
2) Uniform Static Air Pressure Test, Loading per FBC TAS 202-94  
3) Water Resistance Test, per FBC, TAS 202-94  
4) Large Missile Impact Test per FBC, TAS 201-94  
5) Cyclic Wind Pressure Loading per FBC, TAS 203-94  
6) Forced Entry Test, per FBC 2411 3.2.1, TAS 202-94  
along with marked-up drawings and installation diagram of American and Contura mahogany outswing single casement window, prepared by Fenestration Testing Laboratory, Inc., Test Report No. **FTL-5573**, dated 03/10/08, signed and sealed by Carlos S. Rionda, P.E.  
*(Submitted under NOA#08-0326.14)*
2. Test reports on: 1) Air Infiltration Test, per FBC, TAS 202-94  
2) Uniform Static Air Pressure Test, Loading per FBC TAS 202-94  
3) Water Resistance Test, per FBC, TAS 202-94  
4) Large Missile Impact Test per FBC, TAS 201-94  
5) Cyclic Wind Pressure Loading per FBC, TAS 203-94  
6) Forced Entry Test, per FBC 2411 3.2.1, TAS 202-94  
along with marked-up drawings and installation diagram of American and Contura mahogany outswing double casement window, prepared by Fenestration Testing Laboratory, Inc., Test Report No. **FTL-5563**, dated 03/10/08, signed and sealed by Carlos S. Rionda, P.E.  
*(Submitted under NOA#08-0326.14)*
3. Test reports on: 1) Air Infiltration Test, per FBC, TAS 202-94  
2) Uniform Static Air Pressure Test, Loading per FBC TAS 202-94  
3) Water Resistance Test, per FBC, TAS 202-94  
4) Large Missile Impact Test per FBC, TAS 201-94  
5) Cyclic Wind Pressure Loading per FBC, TAS 203-94  
6) Forced Entry Test, per FBC 2411 3.2.1, TAS 202-94  
along with marked-up drawings and installation diagram of American and Contura mahogany outswing double casement window, prepared by Fenestration Testing Laboratory, Inc., Test Report No. **FTL-5561**, dated 03/08/08, signed and sealed by Carlos S. Rionda, P.E.  
*(Submitted under NOA#08-0326.14)*
4. Test reports on: 1) Air Infiltration Test, per FBC, TAS 202-94  
2) Uniform Static Air Pressure Test, Loading per FBC TAS 202-94  
3) Water Resistance Test, per FBC, TAS 202-94  
4) Large Missile Impact Test per FBC, TAS 201-94  
5) Cyclic Wind Pressure Loading per FBC, TAS 203-94  
6) Forced Entry Test, per FBC 2411 3.2.1, TAS 202-94  
along with marked-up drawings and installation diagram of American and Contura mahogany outswing (XOX) casement window, prepared by Fenestration Testing Laboratory, Inc., Test Report No. **FTL-5531**, dated 03/08/08, signed and sealed by Carlos S. Rionda, P.E.  
*(Submitted under NOA#08-0326.14)*



**Jaime D. Gascon, P.E.**  
**Product Control Section Supervisor**  
**NOA No. 12-0614.05**  
**Expiration Date: March 26, 2018**  
**Approval Date: August 23, 2012**

**Hartman Windows and Doors, LLC**

**NOTICE OF ACCEPTANCE: EVIDENCE SUBMITTED**

5. Test reports on: 1) Air Infiltration Test, per FBC, TAS 202-94  
2) Uniform Static Air Pressure Test, Loading per FBC TAS 202-94  
3) Water Resistance Test, per FBC, TAS 202-94  
4) Large Missile Impact Test per FBC, TAS 201-94  
5) Cyclic Wind Pressure Loading per FBC, TAS 203-94  
6) Forced Entry Test, per FBC 2411 3.2.1, TAS 202-94  
along with marked-up drawings and installation diagram of American and Contura mahogany outswing single casement window, prepared by Fenestration Testing Laboratory, Inc., Test Report No. FTL-5530, dated 03/06/08, signed and sealed by Carlos S. Rionda, P.E.  
*(Submitted under NOA#08-0326.14)*

**C. CALCULATIONS**

1. Anchor verification calculations and structural analysis, complying with FBC-2010, prepared by Al-Farooq Corporation, dated 05/11/12, signed and sealed by Javad Ahmad, P.E.
2. Glazing complies with ASTM E1300-04

**D. QUALITY ASSURANCE**

1. Miami-Dade Department of Permitting, Environment, and Regulatory Affairs (PERA)

**E. MATERIAL CERTIFICATIONS**

1. Notice of Acceptance No. **11-0624.02** issued to E.I. DuPont DeNemours & Co., Inc. for their "DuPont SentryGlas® Interlayer" dated 08/25/11, expiring on 01/14/17.
2. Notice of Acceptance No. **11-0624.01** issued to E.I. DuPont DeNemours & Co., Inc. for their "DuPont Butacite® PVB Interlayer" dated 09/08/11, expiring on 12/11/16.

**F. STATEMENTS**

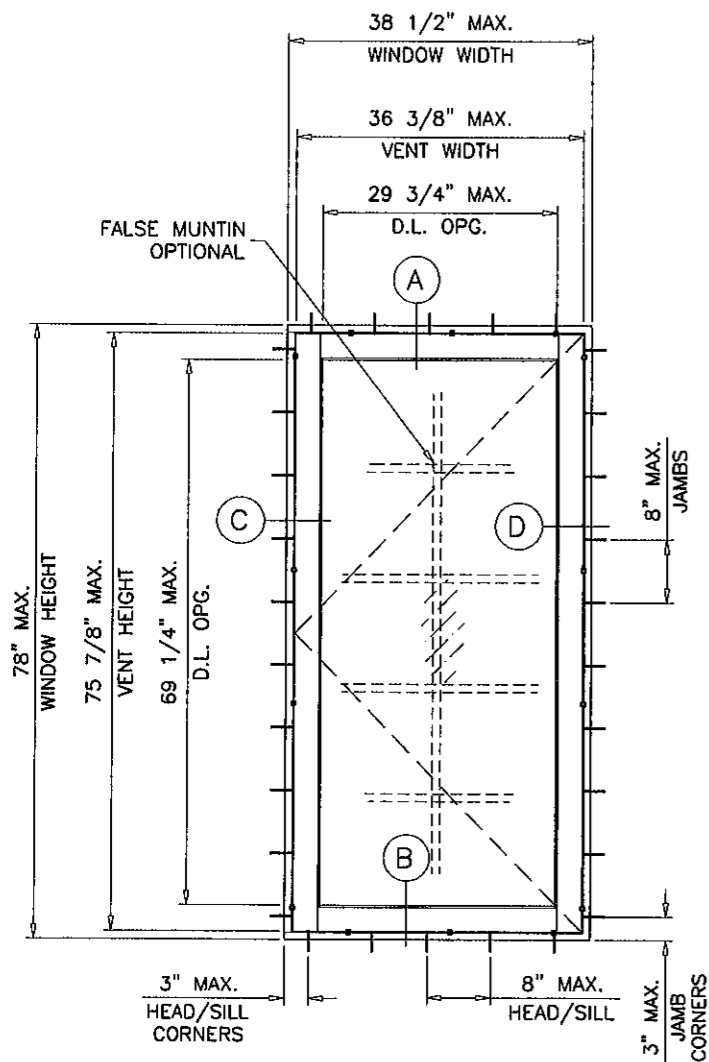
1. Statement letter of conformance, complying with FBC 2010, dated May 11, 2012, signed and sealed by Javad Ahmad, P.E.
2. Statement letter of no financial interest, dated May 11, 2012, signed and sealed by Javad Ahmad, P.E.
3. Laboratory compliance letters for Test Report No. FTL- 5573, FTL- 5563, FTL- 5561, FTL- 5531, FTL- 5530, issued by Hurricane Test Laboratory, Inc., dated March 10, 2008, signed and sealed by Carlos S. Rionda, P.E.  
*(Submitted under previous NOA# 08-0326.14)*

**G. OTHERS**

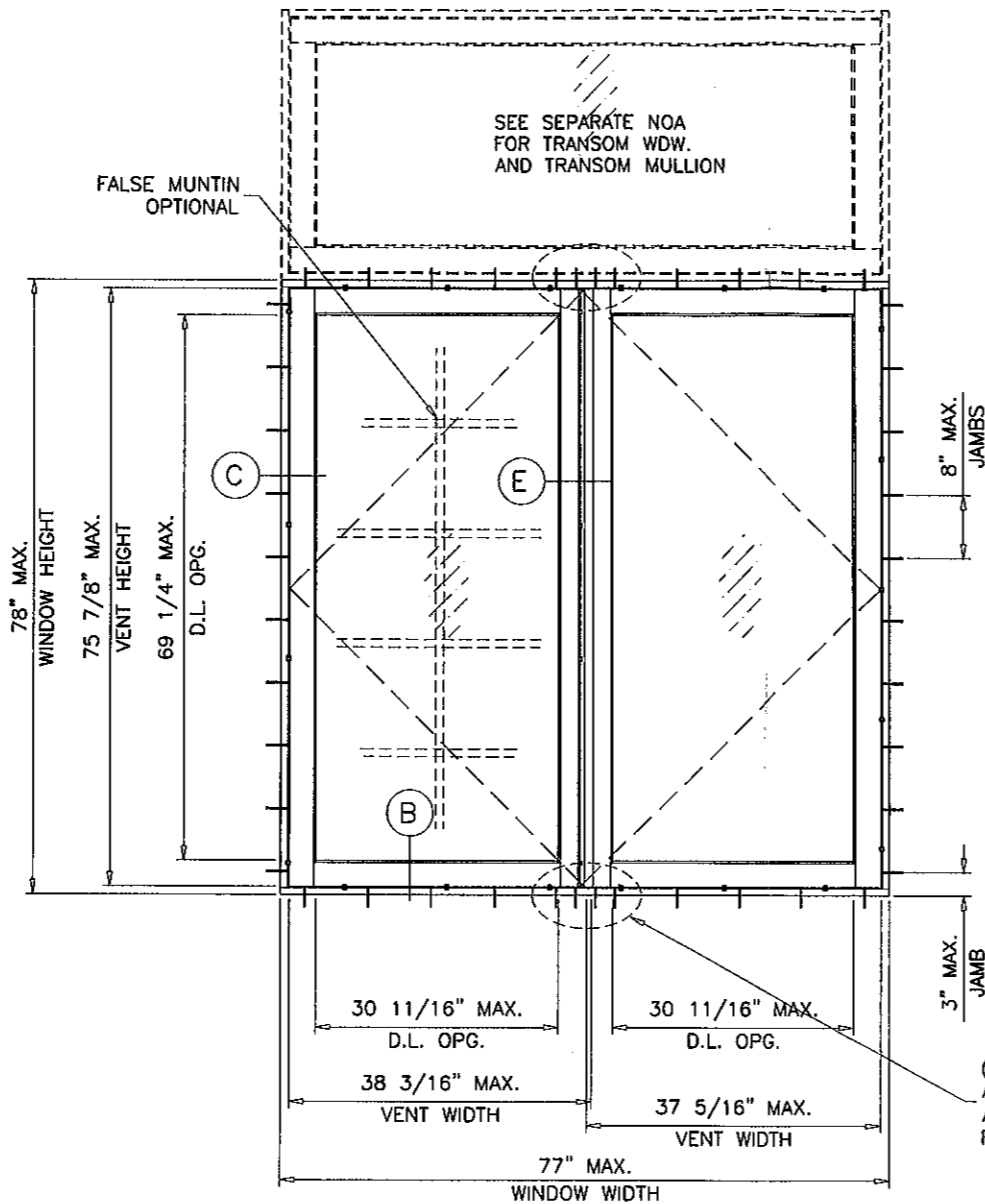
1. Notice of Acceptance No. **08-0326.14**, issued to Hartman Windows and Doors, LLC for their Series "Contura" Outswing Wood Casement Window – L.M.I., approved on 04/24/08 and expiring on 03/26/13.



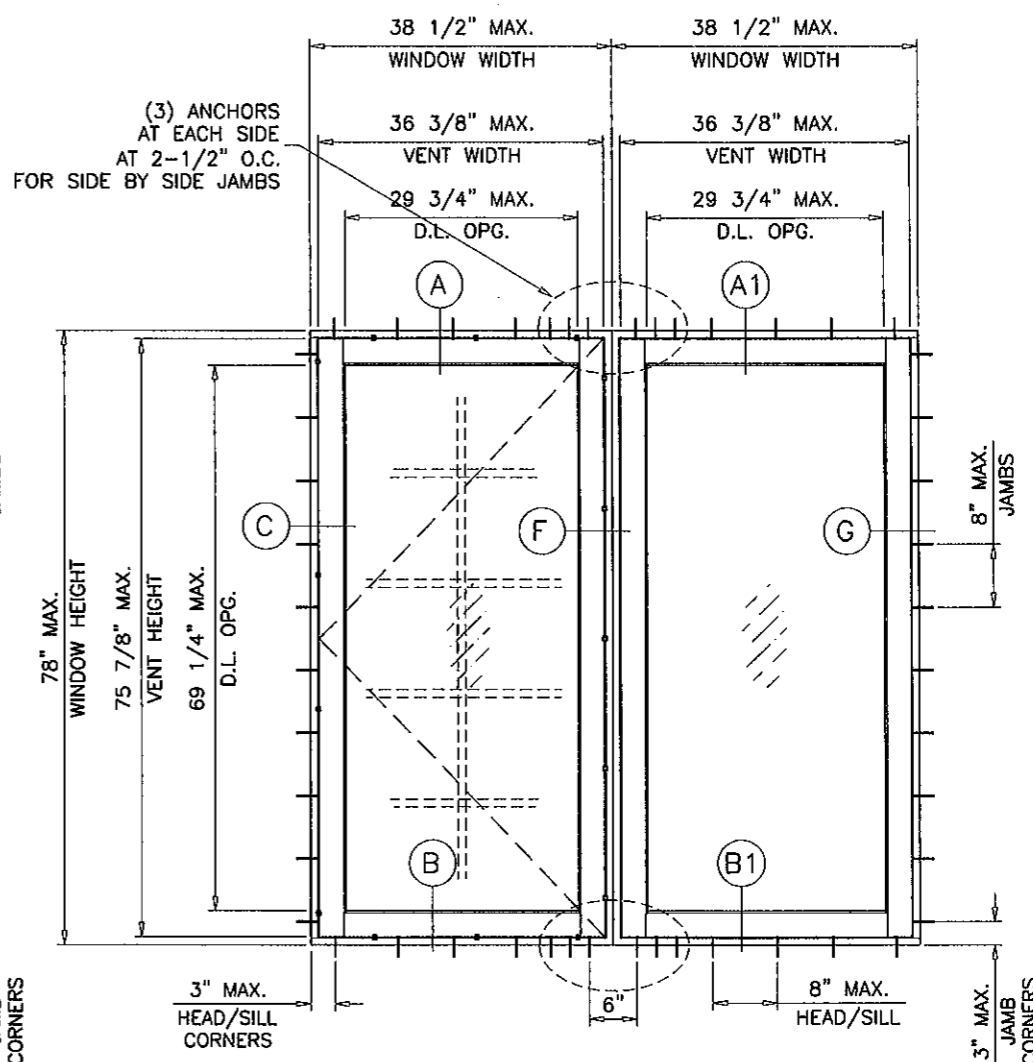
Jaime D. Gascon, P.E.  
Product Control Section Supervisor  
NOA No. 12-0614.05  
Expiration Date: March 26, 2018  
Approval Date: August 23, 2012



**SINGLE VENT (XX)**



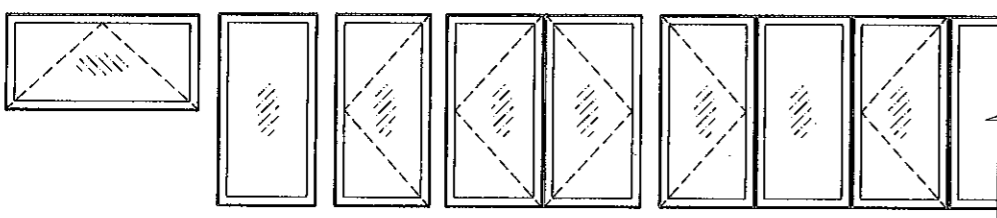
**DUAL VENT (XX)**



**SIDE BY SIDE (X-O)**

**SERIES CONTURA  
OPEN OUT WOOD CASEMENT WINDOW**

APPROVAL APPLIES TO SINGLE OPERATING(X), STATIONARY(O) AND DOUBLE OPERATING(XX) UNITS.  
ALSO SIDE BY SIDE COMBINATIONS OF OPERATING/OPERATING OR OPERATING/STATIONARY UNITS IN MODULES OF TWO OR MORE WINDOWS.  
WINDOWS CAN BE ORIENTED VERTICALLY OR HORIZONTALLY.



THESE WINDOWS CAN ALSO BE INSTALLED IN COMBINATION WITH MIAMI-DADE COUNTY APPROVED PRODUCTS USING MIAMI-DADE COUNTY APPROVED MULLIONS IN BETWEEN. LOWER DESIGN PRESSURES FROM WINDOWS, DOORS OR MULLION APPROVAL WILL APPLY TO ENTIRE SYSTEM.

THESE WINDOWS ARE RATED FOR LARGE MISSILE IMPACT. SHUTTERS ARE NOT REQUIRED.

THIS PRODUCT HAS BEEN DESIGNED AND TESTED TO COMPLY WITH THE REQUIREMENTS OF THE FLORIDA BUILDING CODE INCLUDING HIGH VELOCITY HURRICANE ZONE (HVHZ).

WOOD BUCKS BY OTHERS, MUST BE ANCHORED PROPERLY TO TRANSFER LOADS TO THE STRUCTURE.

ANCHORS SHALL BE AS LISTED, SPACED AS SHOWN ON DETAILS, ANCHORS EMBEDMENT TO BASE MATERIAL SHALL BE BEYOND WALL DRESSING OR STUCCO.

ANCHORING OR LOADING CONDITIONS NOT SHOWN IN THESE DETAILS ARE NOT PART OF THIS APPROVAL.

A LOAD DURATION INCREASE IS USED IN DESIGN OF ANCHORS INTO WOOD ONLY.

MATERIALS INCLUDING BUT NOT LIMITED TO STEEL/METAL SCREWS, THAT COME INTO CONTACT WITH OTHER DISSIMILAR MATERIALS SHALL MEET THE REQUIREMENTS OF THE FLORIDA BLDG. CODE SECTION 2003.8.4.

**SINGLE VENT WINDOWS (X OR O)**  
SIDE BY SIDE COMBINATIONS OF SINGLE VENT WDWS.  
MAXIMUM DESIGN LOAD RATING = + 90.0 PSF  
(FOR SIZES SHOWN OR SMALLER) - 90.0 PSF

**DUAL VENT WINDOWS (XX)**  
SIDE BY SIDE COMBINATIONS OF DUAL VENT WDWS.  
MAXIMUM DESIGN LOAD RATING = + 80.0 PSF  
(FOR SIZES SHOWN OR SMALLER) - 80.0 PSF

NOTE:  
GLASS CAPACITIES ON THIS SHEET ARE BASED ON ASTM E1300-04 (3 SEC. GUSTS) AND FLORIDA BUILDING COMMISSION DECLARATORY STATEMENT DCA05-DEC-219

Engr: JAVAD AHMAD  
CIVIL  
FLA. PE # 70592  
C.A.N. 3538

MAY 31 2012

**PRODUCT REVISED**  
as complying with the Florida Building Code  
Acceptance No. 12-0614.05  
Expiration Date 3/26/2018  
By: [Signature]  
Miami Dade Product Control

**AL-FAROOQ CORPORATION**  
ENGINEERS & PRODUCT DEVELOPMENT  
1235 S.W. 87 AVE  
MIAMI, FLORIDA 33174  
TEL. (305) 264-8100 FAX. (305) 262-6978  
COMP -ANL\W08-26HWD

CONTURA OUTSWING WOOD CASEMENT WDW. (L.M.I.)  
**HARTMAN WINDOWS & DOORS, LLC**  
531 SOUTHERN BLVD.  
WEST PALM BEACH, FL 33405  
TEL. (561) 296-9600 FAX. (561) 296-9601

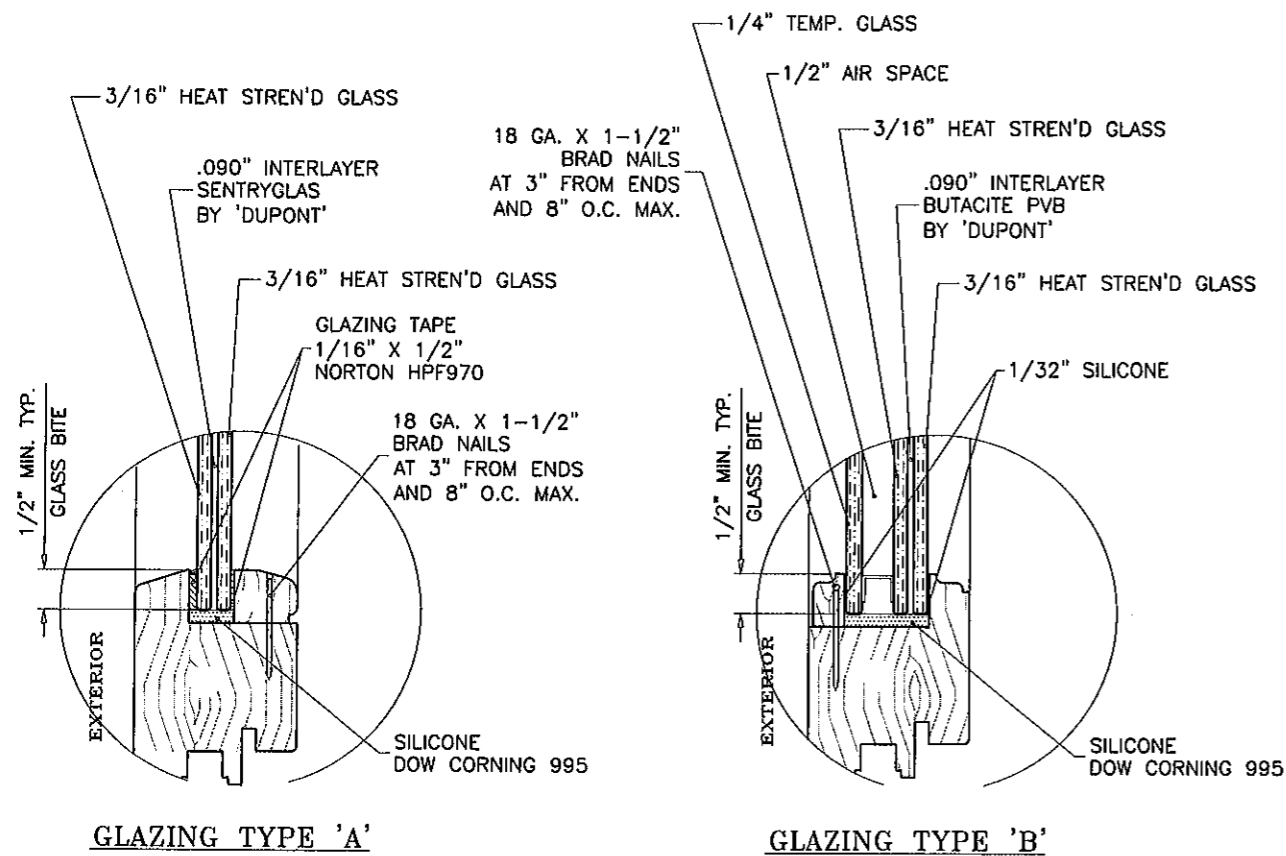
revisions:	no.	date	by	description
	A	05.16.12		UPDATED TO 2010 FBC

date:	03-13-08
scale:	1/2"=1'-0"
dr. by:	HAMID
chk. by:	

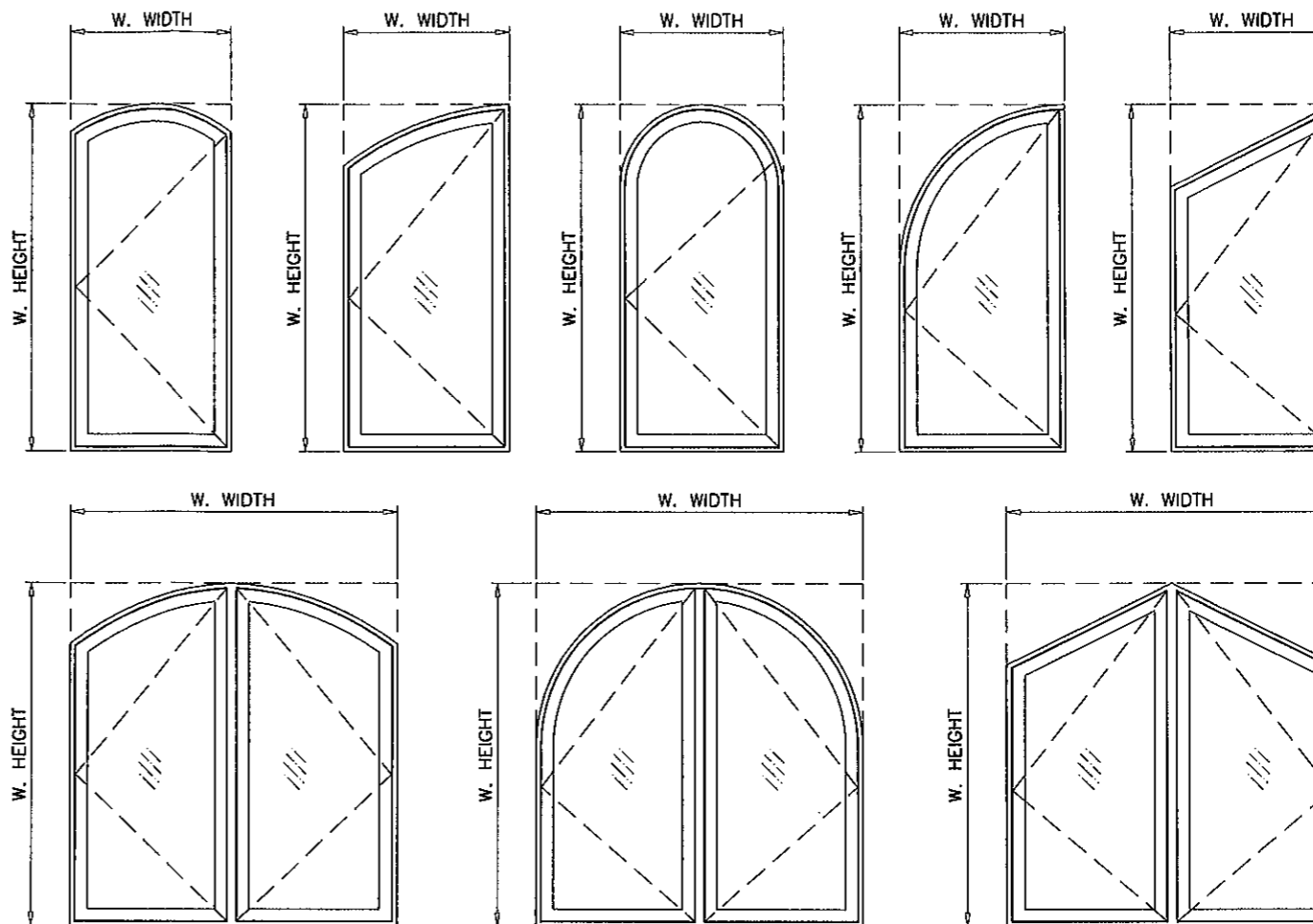
drawing no.	W08-26
sheet	1 of 7



GLAZING TYPE 'A'

GLAZING TYPE 'B'

GLAZING OPTIONS



ALLOWABLE LOADS FOR ALTERNATE SHAPES AS SHOWN ABOVE OR SIMILAR CAN BE VERIFIED BY INSCRIBING WINDOW SHAPE WITHIN SQUARE OR RECTANGLE AS SHOWN IN DOTTED LINES AND OBTAINING ALLOWABLE LOADS FROM THOSE SHAPES.

LOCKS:

12 POINT LOCK SYSTEM WITH KEEPERS BY 'GU' SURFACE MOUNT ACTIVATING HANDLE AT 37" FROM BOTTOM FASTENED WITH (2) #12 X 1-3/4" FH MS. SURFACE MOUNT METALLIC KEEPERS FACING LOCKS EACH FASTENED WITH (3) #8 X 1-1/4" FH SMS  
 (3) KEEPERS AT HEAD  
 (3) KEEPERS AT SILL  
 (6) KEEPERS AT JAMB

HINGES:

OPTION #1:

3-1/2" LONG METALLIC BUTT HINGES  
 (3) PER VENT AT 9" FROM TOP & BOTTOM AND AT CENTER, FASTENED TO FRAME W/ (3) #12 X 1-1/4" FH SMS  
 VENT W/ (3) #10 X 1" FH SMS

OPTION #2:

SURFACE MOUNT CONTURA HINGE (K-14932) BY 'GU' (2) PER VENT, FASTENED TO FRAME W/ (3) #8 X 1" FH SMS  
 VENT W/ (4) #8 X 1-3/4" FH SMS

SNUBBERS:

TWO PIECE METALLIC/PLASTIC ANTI-BLOW OUT CLIPS  
 (4) PER VENT AT HINGE JAMBS LOCATED AT 7" FROM TOP & BOTTOM AND 22" O.C. MAX. EACH FASTENED TO FRAME W/ (2) #8 X 1-1/4" FH SMS  
 VENT W/ (2) #8 X 1-1/2" FH SMS

HINGES AND LOCKS CAN BE USED IN ANY COMBINATIONS

Engr: JAVAD AHMAD  
 CIVIL  
 FLA. PE # 70592  
 C.A.N. 3538  
 MAY 31 2012

PRODUCT REVISED  
 as complying with the Florida Building Code  
 Acceptance No. 12-0614.05  
 Expiration Date 3/26/2018  
 By: *Javad Ahmad*  
 Miami Dade Product Control

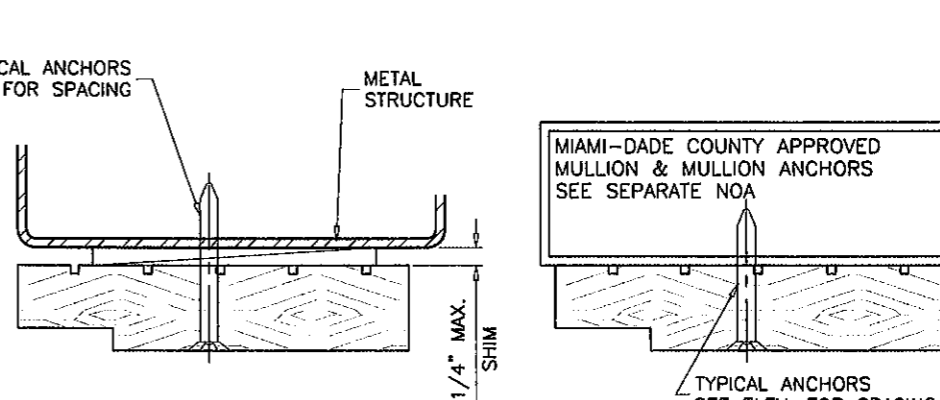
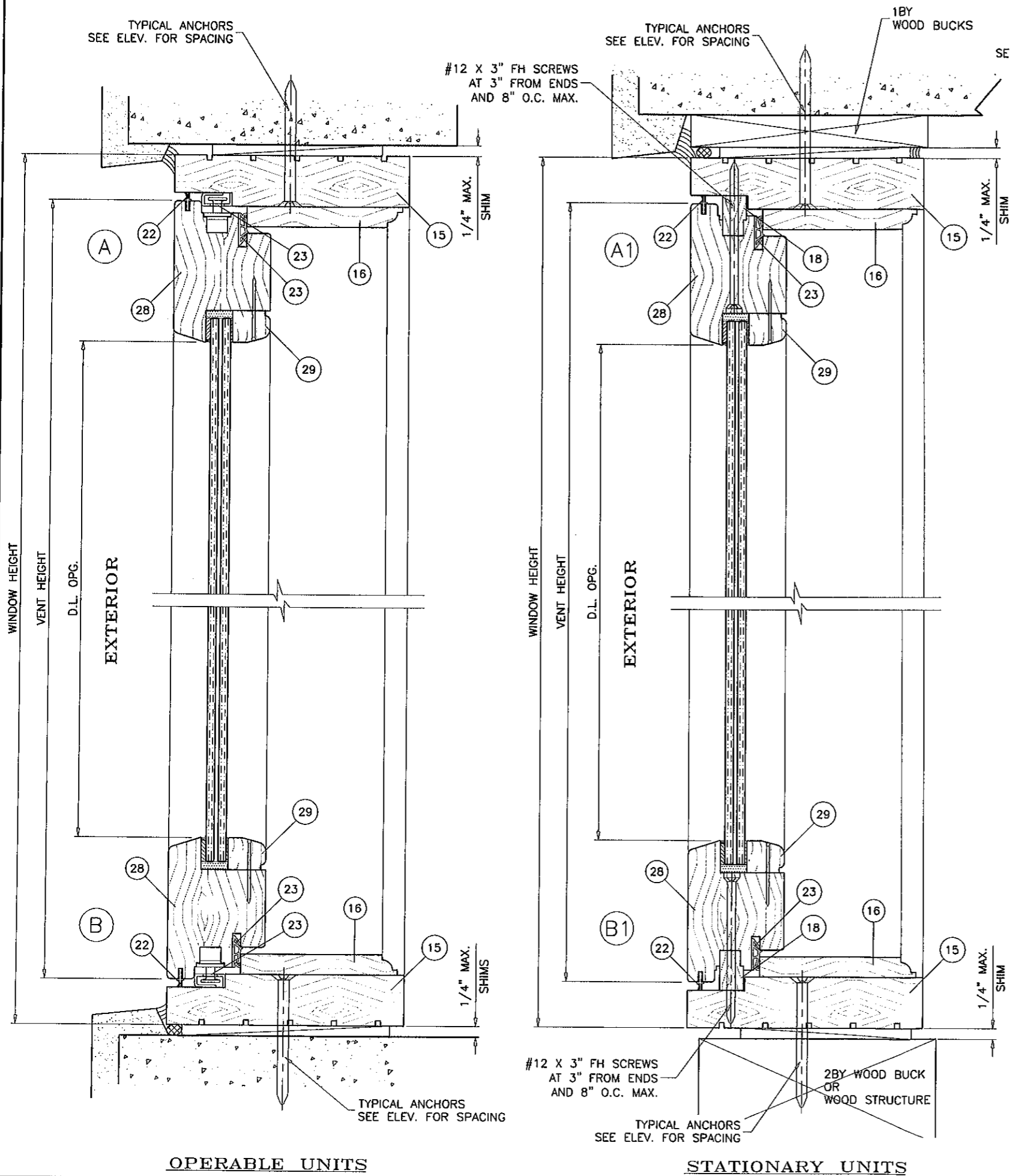
**af c**  
**AL-FAROOQ CORPORATION**  
 ENGINEERS & PRODUCT DEVELOPMENT  
 1235 S.W. 87 AVE  
 MIAMI, FLORIDA 33174  
 TEL (305) 264-8100 FAX (305) 262-6978  
 COMP-ANL\W08-26HWD

CONTURA OUTSWING WOOD CASEMENT WDW. (L.M.I.)  
**HARTMAN WINDOWS & DOORS, LLC**  
 531 SOUTHERN BLVD.  
 WEST PALM BEACH, FL 33405  
 TEL (561) 296-9600 FAX (561) 296-9601

no	date	by	description
A	05.16.12		UPDATED TO 2010 FBC

date: 03-13-08  
 scale: 3/8" = 1"  
 dr. by: HAMID  
 chk. by:

drawing no.  
**W08-26**  
 sheet 2 of 7



WOOD BUCKS NOT BY HARTMAN WINDOWS, MUST SUSTAIN LOADS IMPOSED BY GLAZING SYSTEM AND TRANSFER THEM TO THE BUILDING STRUCTURE.

**TYPICAL ANCHORS:** SEE ELEV. FOR SPACING

**ANCHORS THRU WINDOW FRAME**

- 1/4" DIA. ULTRACON BY 'ELCO' (Fu=177 KSI, Fy=155 KSI)
- INTO 2BY WOOD BUCKS OR WOOD STRUCTURES
- 1-1/2" MIN. PENETRATION INTO WOOD
- THRU 1BY BUCKS INTO CONC. OR MASONRY
- 1-1/4" MIN. EMBED INTO CONC. OR MASONRY
- DIRECTLY INTO CONC. OR MASONRY
- 1-1/4" MIN. EMBED INTO CONC. OR MASONRY

- #14 SMS OR SELF DRILLING SCREWS** (GRADE 2 CRS)
- INTO MIAMI-DADE COUNTY APPROVED MULLIONS (MIN. THK. = 1/8")
- INTO METAL STRUCTURES
- STEEL : 1/8" THK. MIN. (Fy = 36 KSI MIN.)
- ALUMINUM : 1/8" THK. MIN. (6063-T5 MIN.)
- (STEEL IN CONTACT WITH ALUMINUM TO BE PLATED OR PAINTED)

**ANCHORS THRU STRAP CLIPS & ALUM ANGLE** (SEE SHEET 5 FOR DETAILS)

- #10 SMS OR SELF DRILLING SCREWS** (GRADE 2 CRS)
- INTO 2BY WOOD BUCKS OR WOOD STRUCTURE
- 1-1/2" MIN. PENETRATION INTO WOOD

**ANCHOR EDGE DISTANCES**

- INTO CONCRETE AND MASONRY = 1-1/2" MIN. (UNLESS SPECIFIED)
- INTO WOOD STRUCTURE = 3/4" MIN. (UNLESS SPECIFIED)
- INTO METAL STRUCTURE = 3/4" MIN.

**ANCHORS CL TO CL DISTANCE**

- INTO CONCRETE AND MASONRY = 3" MIN.
- INTO WOOD STRUCTURE = 3/4" MIN.

CONCRETE AT HEAD, SILL OR JAMBS f'c = 3000 PSI MIN.  
C-90 HOLLOW/FILLED BLOCK AT JAMBS f'm = 2000 PSI MIN.

Engr: JAVAD AHMAD  
CIVIL  
FLA. PE # 70592  
C.A.N. 3538  
MAY 31 2012

**PRODUCT REVISED**  
as complying with the Florida  
Building Code  
Acceptance No. 12-0614-05  
Expiration Date 3/26/2018  
By: *[Signature]*  
Miami Dade Product Control

**af c**  
**AL-FAROOQ CORPORATION**  
ENGINEERS & PRODUCT DEVELOPMENT  
1235 S.W. 87 AVE  
MIAMI, FLORIDA 33174  
TEL. (305) 264-8100 FAX. (305) 262-6978  
COMP-ANL \ W08-26HWD

---

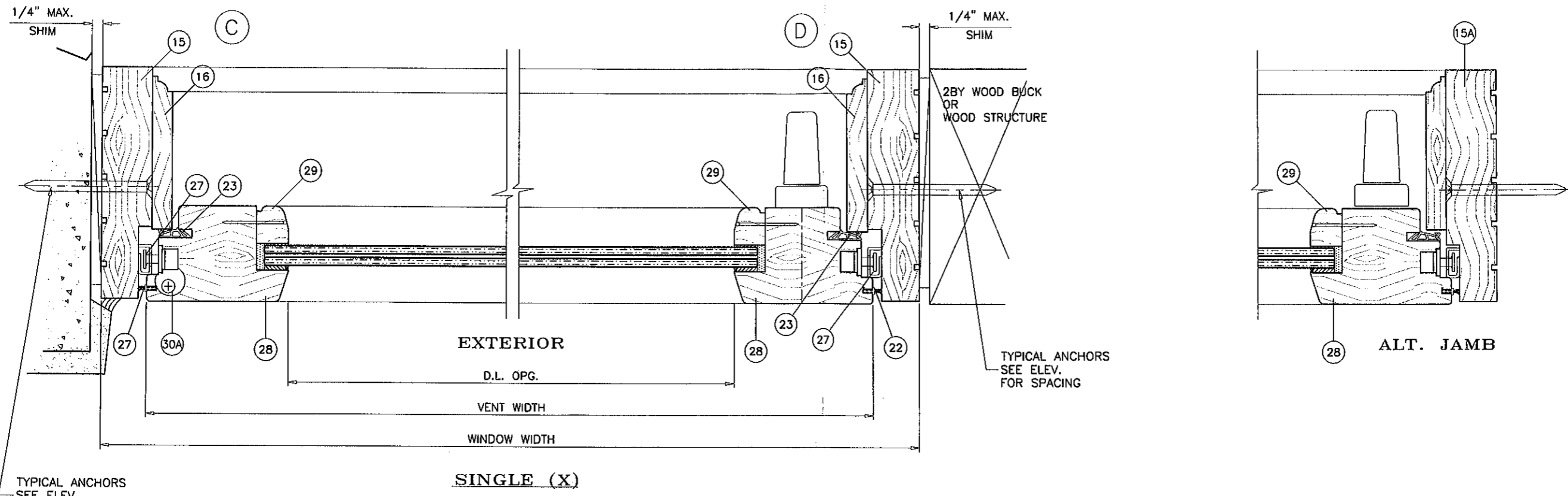
CONTURA OUTSWING WOOD CASEMENT WDW. (L.M.I.)  
**HARTMAN WINDOWS & DOORS, LLC**  
531 SOUTHERN BLVD.  
WEST PALM BEACH, FL 33405  
TEL. (561) 296-9600 FAX. (561) 296-9601

no	date	by	description
A	05.16.12		UPDATED TO 2010 FBC

revisions:

date: 03-13-08  
scale: 3/8" = 1"  
dr. by: HAMID  
chk. by:

drawing no. **W08-26**  
sheet 3 of 7

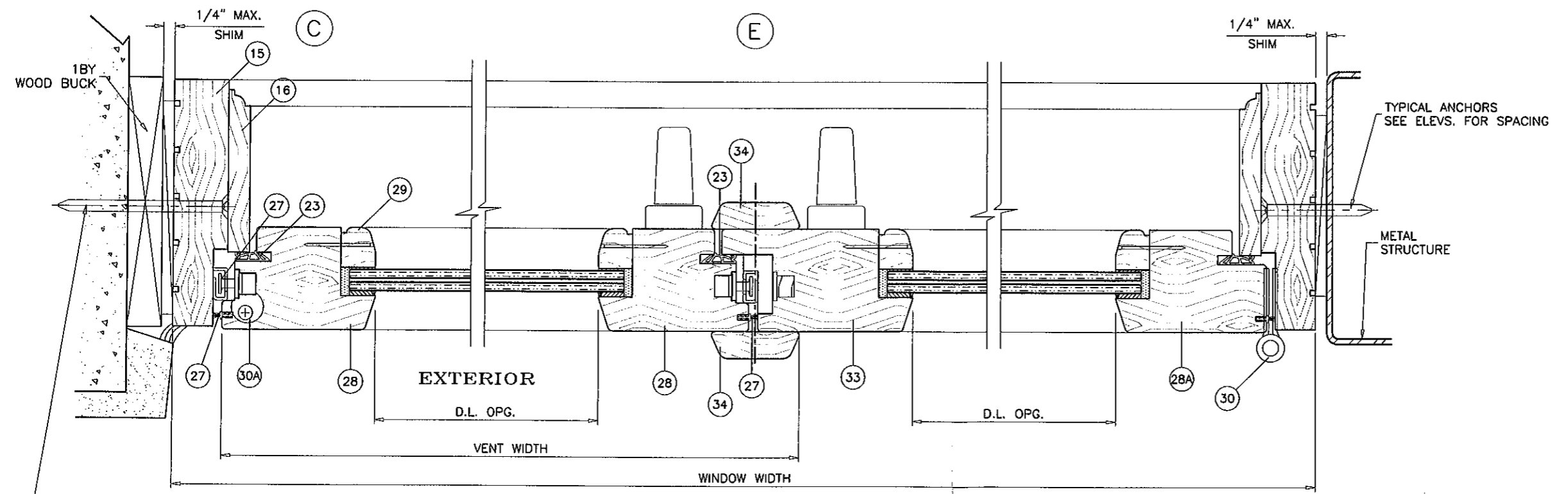


TYPICAL ANCHORS  
SEE ELEV.  
FOR SPACING

TYPICAL ANCHORS  
SEE ELEV.  
FOR SPACING

ALT. JAMB

**SINGLE (X)**



TYPICAL ANCHORS  
SEE ELEV.  
FOR SPACING

TYPICAL ANCHORS  
SEE ELEV. FOR SPACING

METAL  
STRUCTURE

**DOUBLE (XX)**

Engr: JAVAD AHMAD  
CIVIL  
FLA. PE # 70592  
C.A.N. 3538

*Javad Ahmad*

MAY 8 1 2012

**PRODUCT REVISED**  
as complying with the Florida  
Building Code  
Acceptance No 12-0614-05  
Expiration Date 3/26/2018

*Javad Ahmad*  
Miami Dade Product Control

**af c**  
**AL-FAROOQ CORPORATION**  
ENGINEERS & PRODUCT DEVELOPMENT  
1235 S.W. 87 AVE  
MIAMI, FLORIDA 33174  
TEL (305) 264-8100 FAX (305) 262-6978  
COMP-ANL \ W08-26HWD

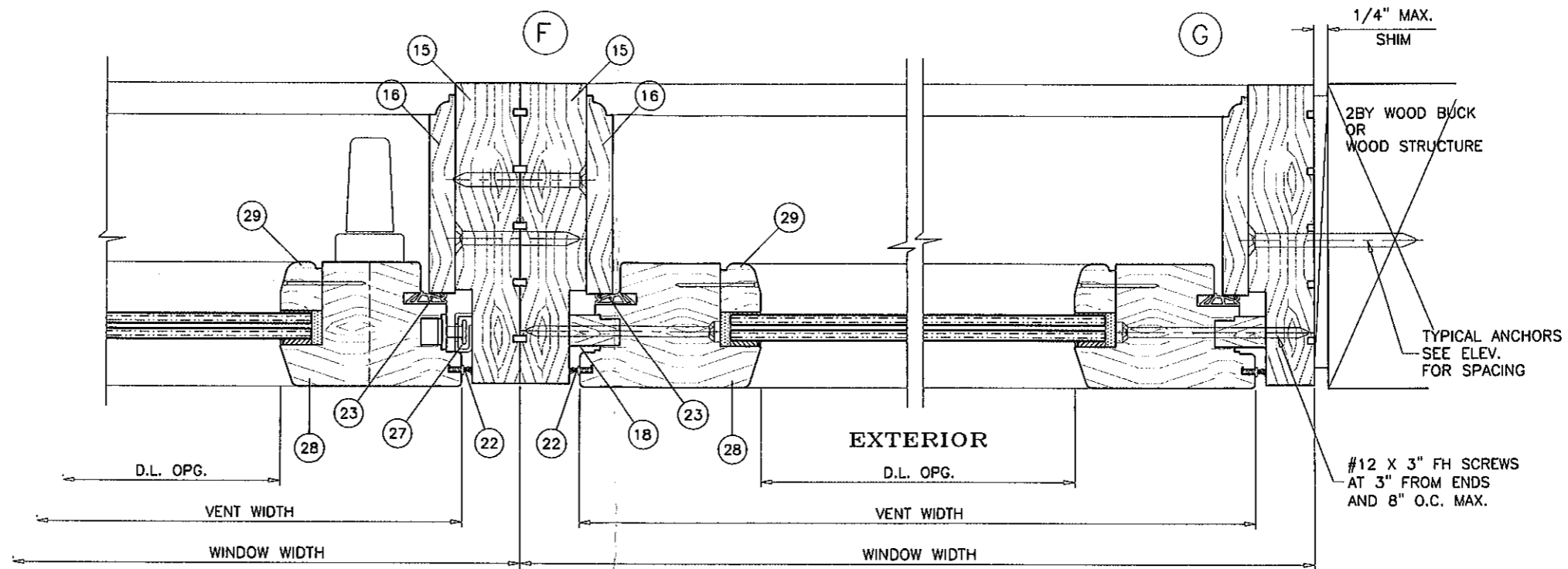
CONTURA OUTSWING WOOD CASEMENT WDW. (L.M.I.)  
**HARTMAN WINDOWS & DOORS, LLC**  
531 SOUTHERN BLVD.  
WEST PALM BEACH, FL 33405  
TEL. (561) 296-9600 FAX. (561) 296-9601

revisions:	no	date	by	description
	A	05.16.12		NO CHANGE THIS SHEET

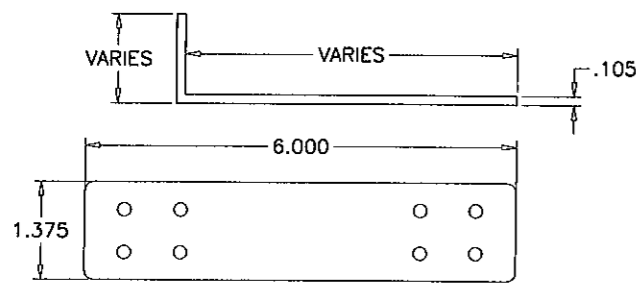
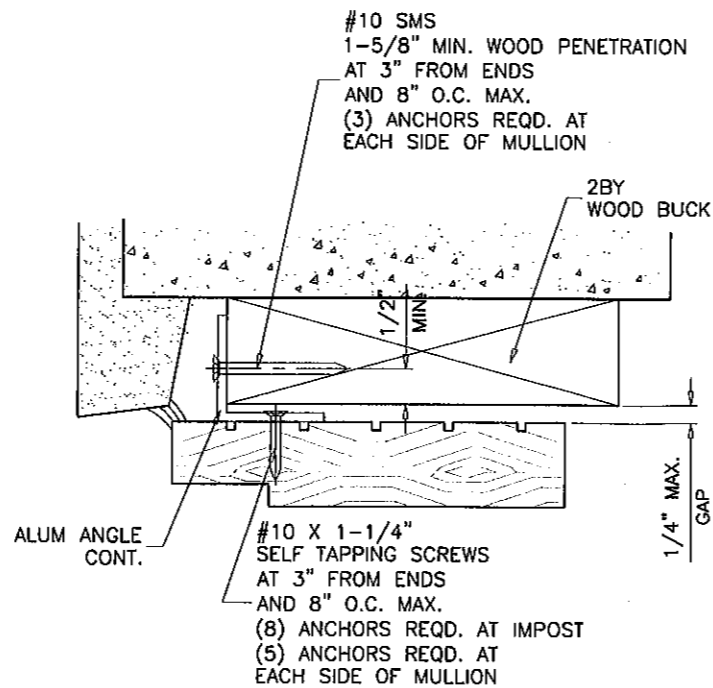
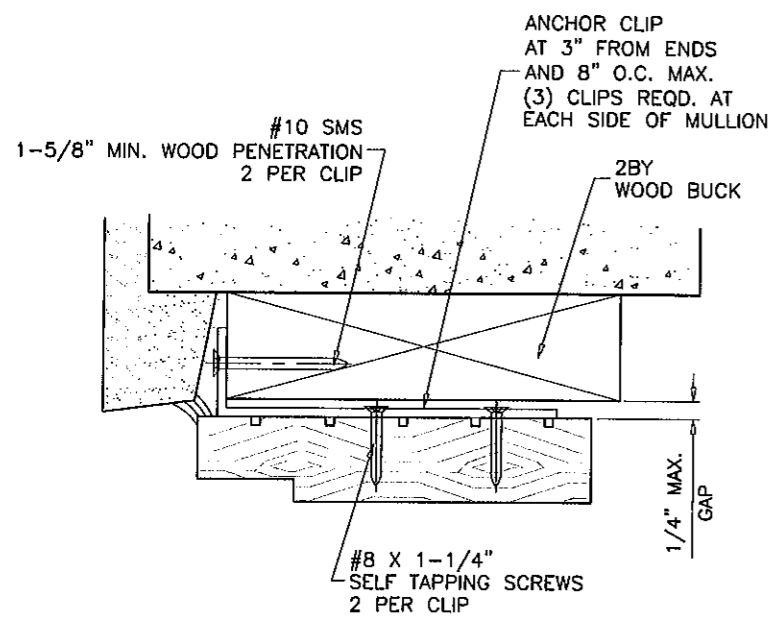
date: 03-13-08  
scale: 3/8" = 1"  
dr. by: HAMID  
chk. by:

drawing no.  
**W08-26**

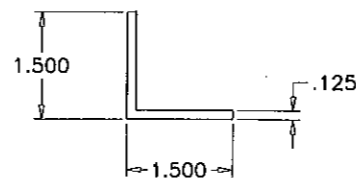
sheet 4 of 7



STATIONARY (O)



STRAP CLIP  
12 GA. GALV. STEEL



ALUM. ANGLE CONT.  
6063-T5

Engr: JAVAD AHMAD  
CIVIL  
FLA. PE # 70592  
C.A.N. 3538  
MAY 31 2012

PRODUCT REVISED  
as complying with the Florida  
Building Code  
Acceptance No 12-0614.05  
Expiration Date 3/26/2018

afc

AL-FAROOQ CORPORATION  
ENGINEERS & PRODUCT DEVELOPMENT  
1235 S.W. 87 AVE  
MIAMI, FLORIDA 33174  
TEL. (305) 264-8100 FAX. (305) 262-6978

CONTURA OUTSWING WOOD CASEMENT WDW. (L.M.I.)  
HARTMAN WINDOWS & DOORS, LLC  
531 SOUTHERN BLVD.  
WEST PALM BEACH, FL 33405  
TEL. (561) 296-9600 FAX. (561) 296-9601

revisions:	no	date	by	description
	A	05.16.12		UPDATED TO 2010 FBC

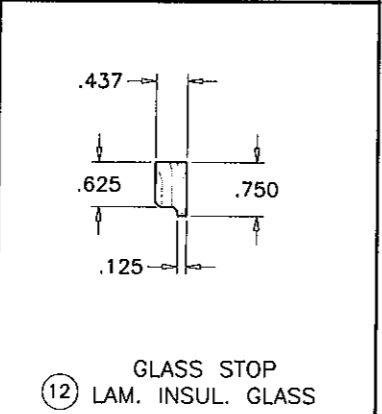
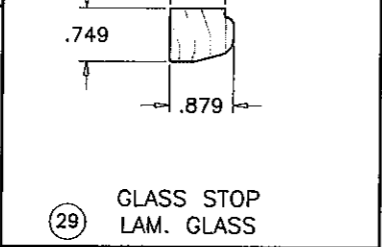
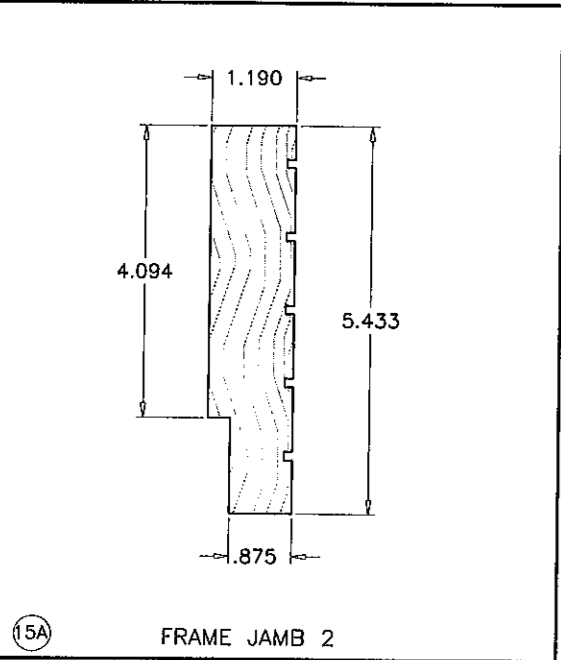
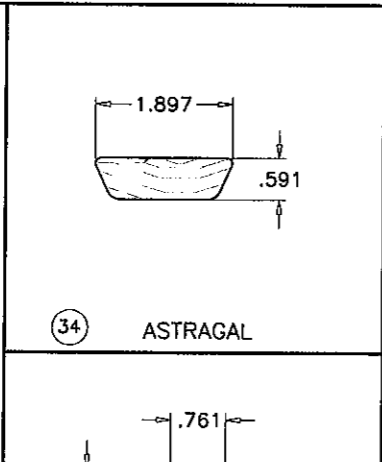
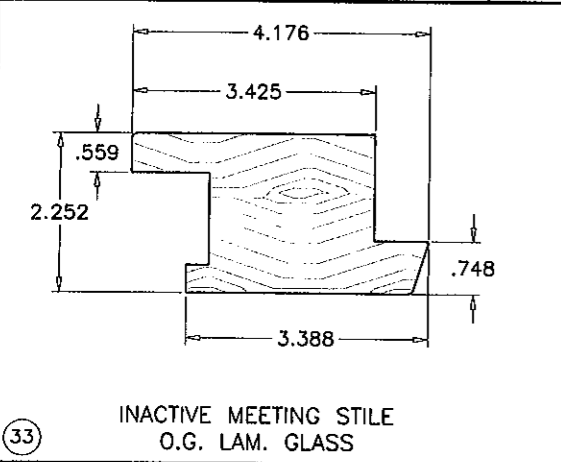
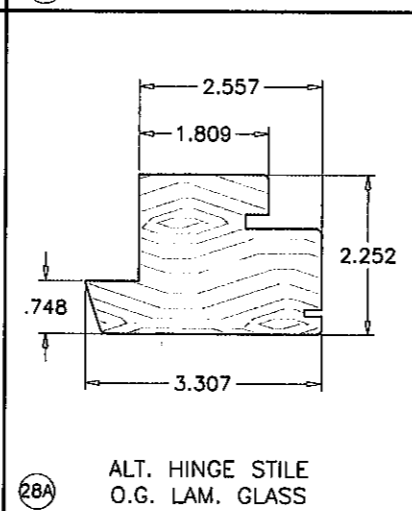
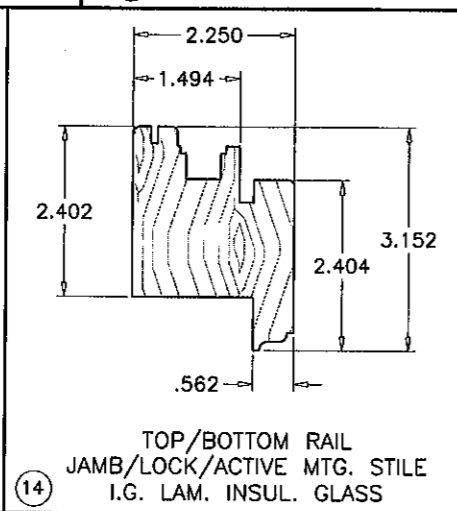
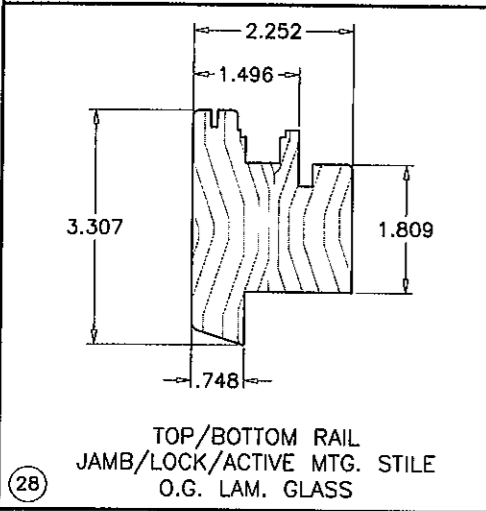
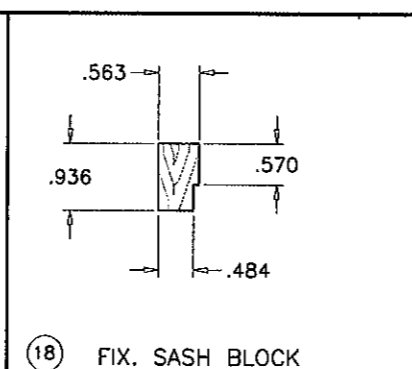
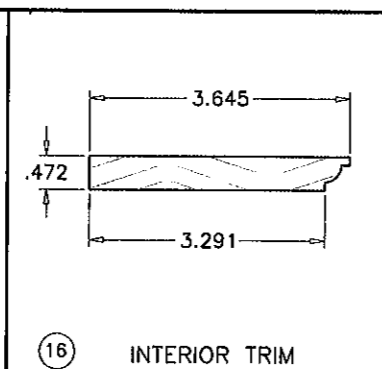
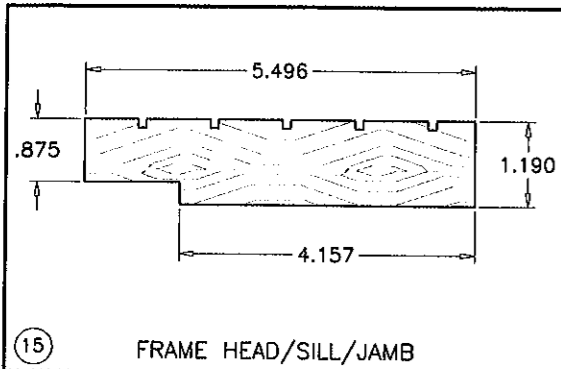
date: 03-13-08  
scale: 3/8" = 1"  
dr. by: H-AMID  
chk. by:

drawing no.  
W08-26

sheet 5 of 7

COMP-ANL \ W08-26HWD






ITEM #	REQD.	DESCRIPTION	MATERIAL	MANF./SUPPLIER/REMARKS
12	-	GLASS STOP IG	WOOD	MAHOGANY OR EQUAL
14	-	CONTURA STILE & RAIL	WOOD	MAHOGANY OR EQUAL
15	-	CONTURA JAMB	WOOD	MAHOGANY OR EQUAL
15A	-	CONTURA JAMB	WOOD	MAHOGANY OR EQUAL
16	-	CONTURA TRIM	WOOD	MAHOGANY OR EQUAL
17	-	CONTURA GLASS STOP IG	WOOD	MAHOGANY OR EQUAL
18	-	CONTURA FIXED SASH BLOCK	WOOD	MAHOGANY OR EQUAL
22	-	FIN SEAL W'STRIPPING	-	SCHLEGEL
23	-	GS 250 W'STRIPPING	VINYL	EUROPROFILI
27	-	LOCK POINT	-	GENERIC
28	-	CONTURA STILE & RAIL	WOOD	MAHOGANY OR EQUAL
28A	-	ALT. HINGE STILE	WOOD	MAHOGANY OR EQUAL
29	-	CONTURA GLASS STOP	WOOD	MAHOGANY OR EQUAL
30	-	3 1/2" X 3 1/2" BUTT HINGE	-	GENERIC
30A	-	CONTURA HINGE	-	-
33	-	CONTURA INACT. MEETING RAIL	WOOD	MAHOGANY OR EQUAL
34	-	ASTRAGAL	WOOD	MAHOGANY OR EQUAL

**AL-FAROOQ CORPORATION**  
 ENGINEERS & PRODUCT DEVELOPMENT  
 1235 S.W. 87 AVE  
 MIAMI, FLORIDA 33174  
 TEL. (305) 264-8100 FAX. (305) 262-6978  
 COMP - ANL W08 - 26HWD

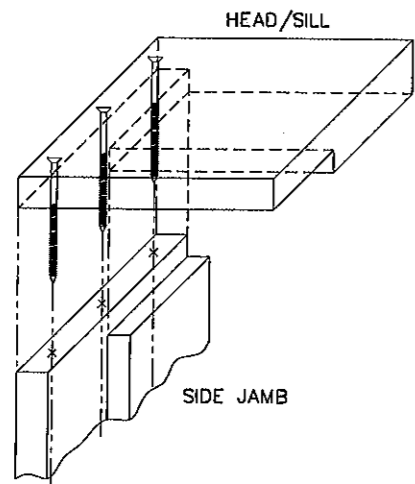
CONTURA OUTSWING WOOD CASEMENT WDW. (L.M.I.)  
**HARTMAN WINDOWS & DOORS, LLC**  
 531 SOUTHERN BLVD.  
 WEST PALM BEACH, FL 33405  
 TEL. (561) 296-9600 FAX. (561) 296-9601

revisions:	no	date	by	description
	A	05.16.12		NO CHANGE THIS SHEET

Engr: JAVAD AHMAD  
 CIVIL  
 FLA. PE # 70592  
 C.A.N. 3538  
  
 MAY 31 2012

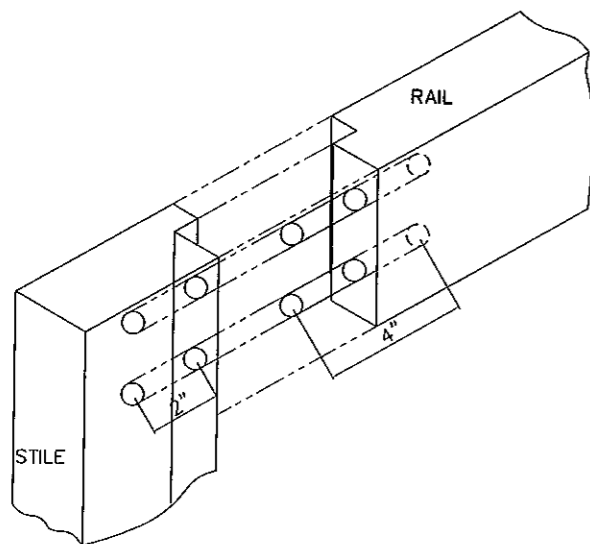
PRODUCT REVISED  
 as complying with the Florida  
 Building Code  
 Acceptance No 12-0614-05  
 Expiration Date 3/26/2018  
 Miami Dade Product Control

date: 03-13-08  
 scale: 3/8" = 1"  
 dr. by: HAMID  
 chk. by:  
 drawing no.  
**W08-26**  
 sheet 6 of 7

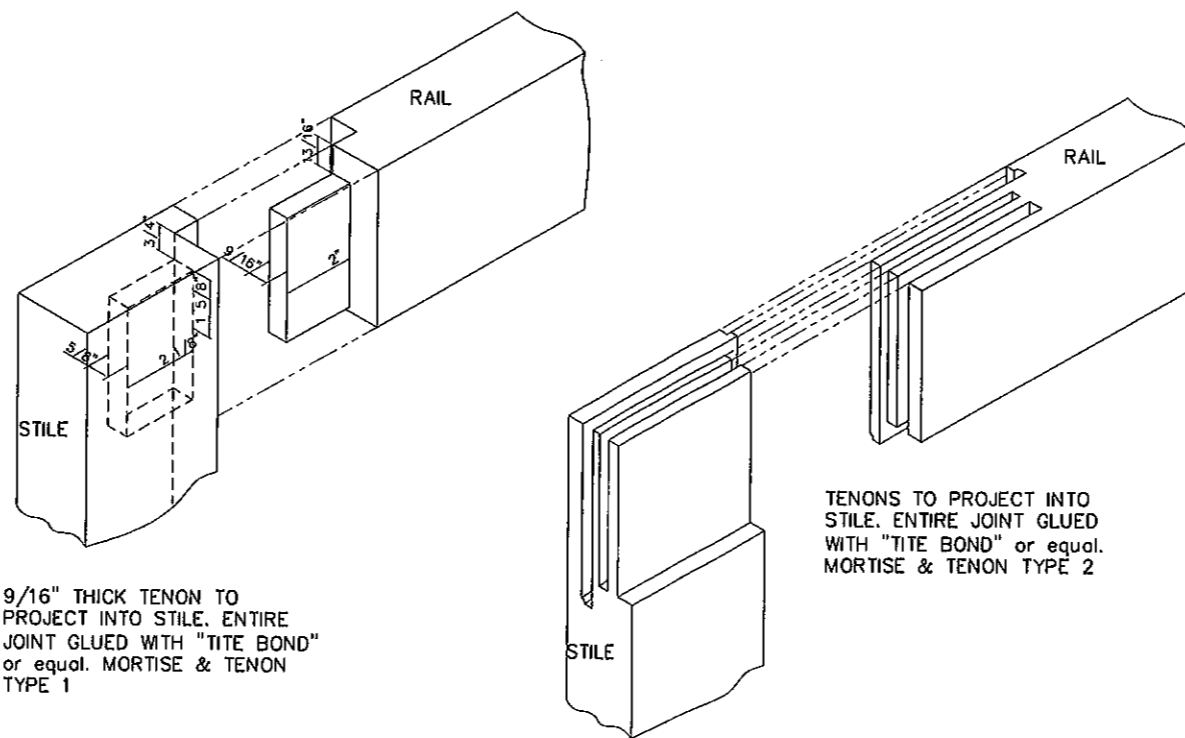


FRAME CORNERS HAVE HALF LAP JOINT TYPICAL AT HEAD AND SILL WITH 3 #12 BY 3 1/2" SS SCREWS AND GLUED WITH NP1

FRAME CORNER DETAILS



5/8" x 4" DOWEL TO PROJECT INTO STILE. ENTIRE JOINT GLUED WITH "TITE BOND" or equal.



9/16" THICK TENON TO PROJECT INTO STILE. ENTIRE JOINT GLUED WITH "TITE BOND" or equal. MORTISE & TENON TYPE 1

TENONS TO PROJECT INTO STILE. ENTIRE JOINT GLUED WITH "TITE BOND" or equal. MORTISE & TENON TYPE 2

VENT CORNER DETAILS

Engr: JAVAD AHMAD  
CIVIL  
FLA. PE # 70592  
C.A.N. 3538

*[Signature]*  
MAY 31 2012

PRODUCT REVISED  
as complying with the Florida  
Building Code  
Acceptance No. 12-6614-05  
Expiration Date 3/26/2018

*[Signature]*  
Miami Dade Product Control

**af c**  
**AL-FAROOQ CORPORATION**  
ENGINEERS & PRODUCT DEVELOPMENT  
1235 S.W. 87 AVE  
MIAMI, FLORIDA 33174  
TEL. (305) 264-8100 FAX. (305) 262-6978  
COMP-ANL\W08-26HWD

CONTURA OUTSWING WOOD CASEMENT WDW. (L.M.I.)  
**HARTMAN WINDOWS & DOORS, LLC**  
531 SOUTHERN BLVD.  
WEST PALM BEACH, FL 33405  
TEL. (561) 296-9600 FAX. (561) 296-9601

revisions:	no	date	by	description
	A	05.16.12		NO CHANGE THIS SHEET

date: 03-13-08  
scale: 3/8" = 1"  
dr. by: HAMID  
chk. by:

drawing no.  
**W08-26**  
sheet 7 of 7